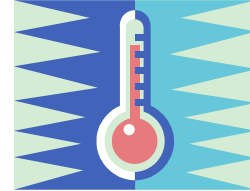


How loud is it?

Extremely loud noises can damage hearing. Ringing in the ears (tinnitus) can be a sign that the sound you are listening to is too loud.

Decibel levels:

- 20 watch ticking
- 30 whispering, library
- 40 leaves rustling, refrigerator
- 50 average home, neighborhood street
- 60 normal conversation, dishwasher, microwave
- 70 car, alarm clock, city traffic
- 80 garbage disposal, noisy restaurant, vacuum cleaner, outboard motor
- 85 factory, electric shaver, screaming child
- 90 passing motorcycle, lawn mower, convertible ride on freeway
- 100 blow-dryer, diesel truck, subway train, chain saw
- 110 car horn, snow blower
- 120 rock concert, prop plane
- 130 jet engine 100 ft away, airway siren
- 140 shot gun blast



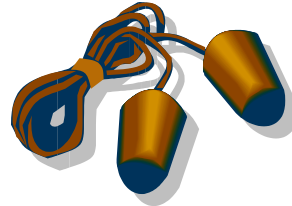
Every step up of 10 decibels reflects a tenfold increase in sound. So 100 decibels is 10 times noisier than 90 decibels.

Wearing earplugs or other noise protection should be used whenever you are exposed to 85 decibels for a period of more than a few hours.

Noise Protection

Earplugs can be custom made to protect the ears from loud noises whether it is occupational sounds or recreational sounds.

- Firearms
- Musician
- Factory noise
- Medical equipment
- Rock music



Swim molds can be custom made to keep water from getting into the ear canals.

These are helpful with children who have tubes in the ears as treatment for chronic fluid or infections.